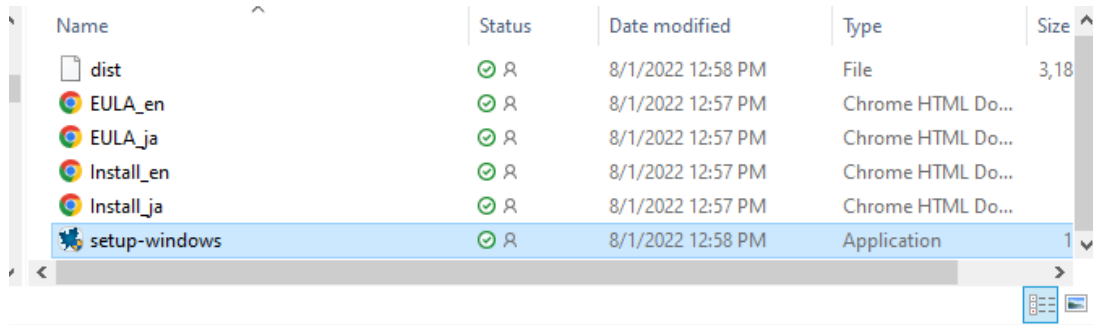


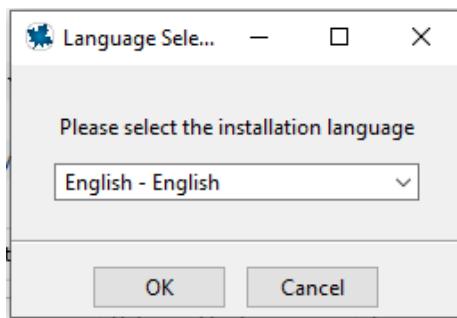
# Maple 2022 for Windows 10 Installation Instructions

Marquette University Information Technology Services

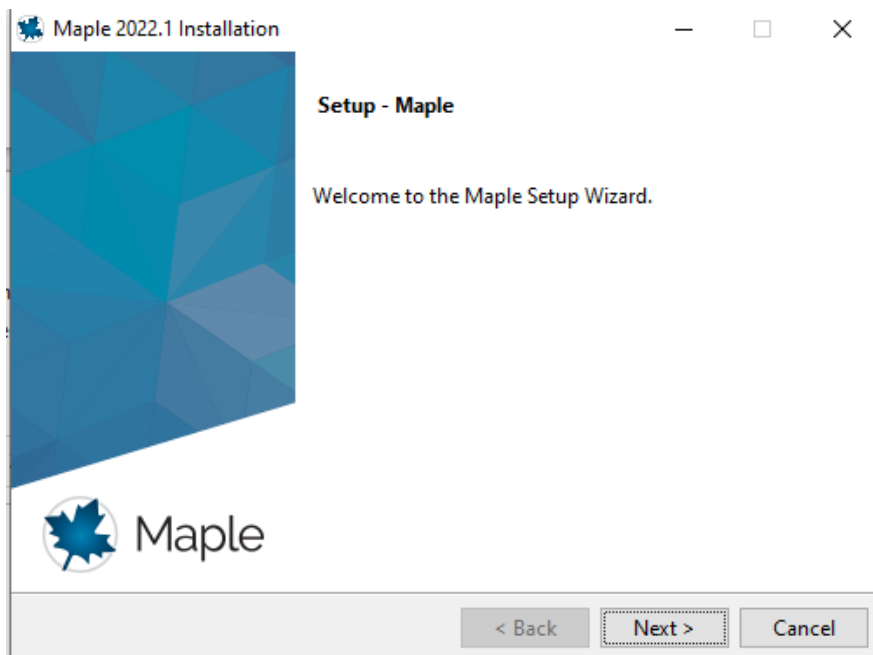
1. Begin installation by right-clicking "*setup-windows*" and selecting **Run as Administrator**. Note the Key text file. You will need this Key text file in Step 13.



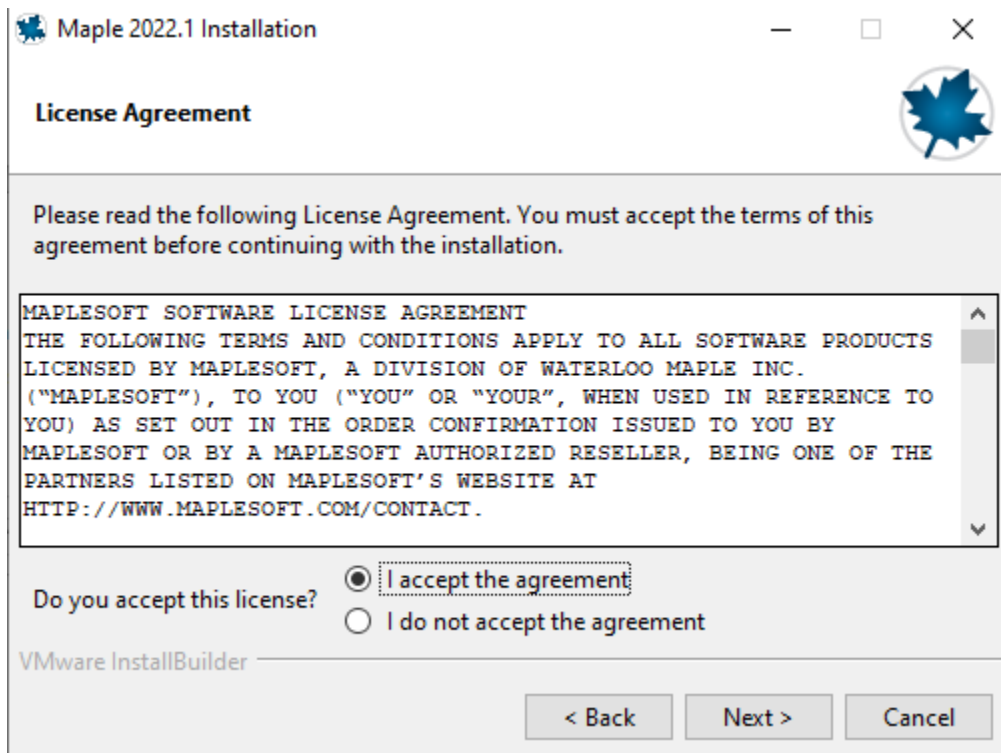
2. Select **OK**.



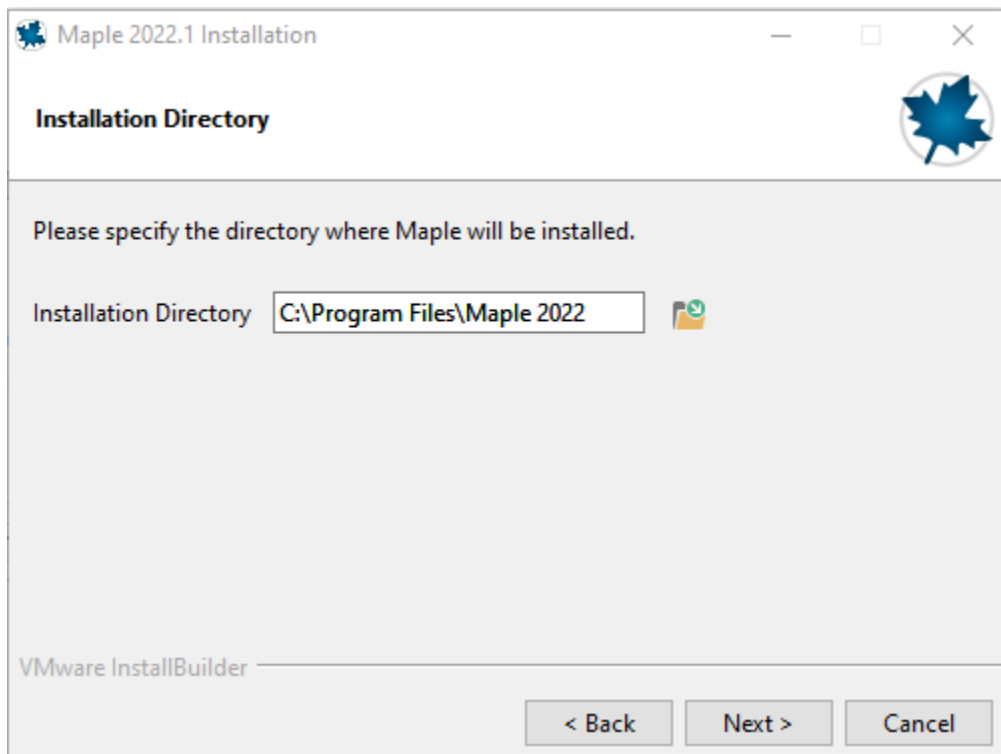
3. Select **Next**.



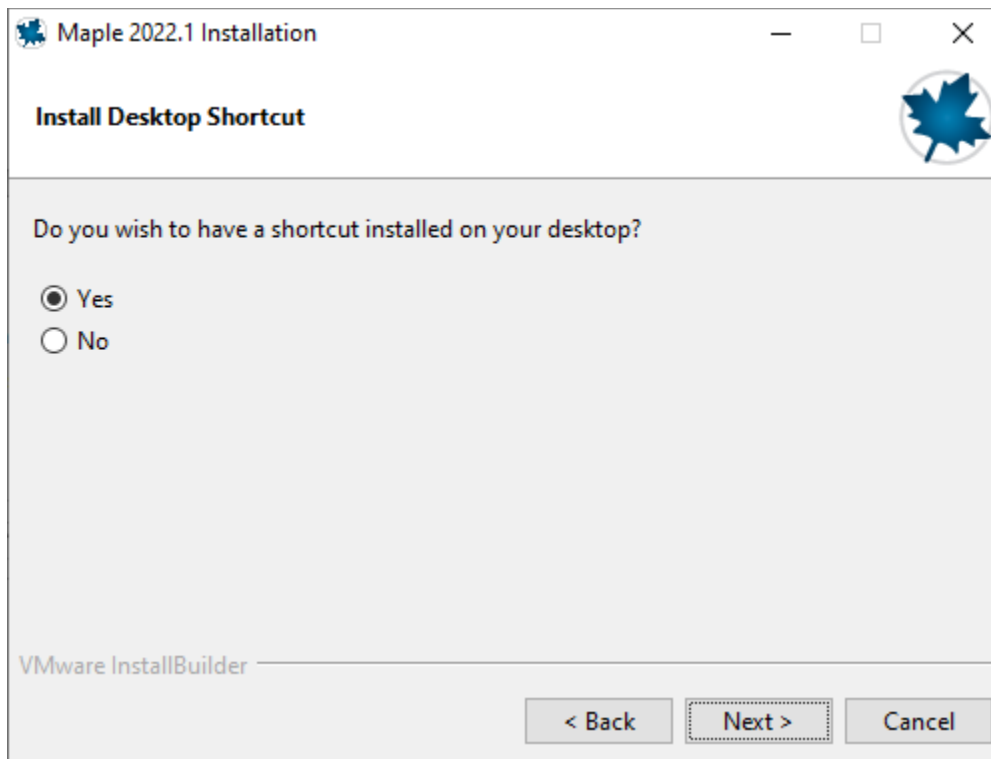
4. Accept the *License Agreement* and select **Next**.



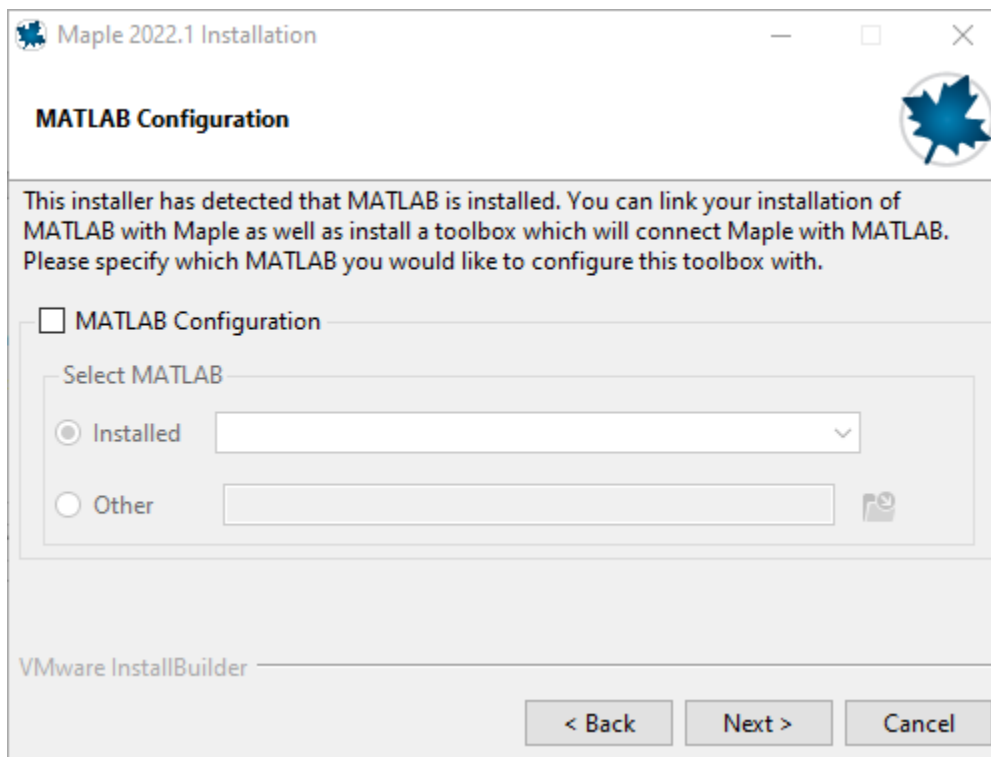
5. Use the default *Installation Directory* and select **Next**.



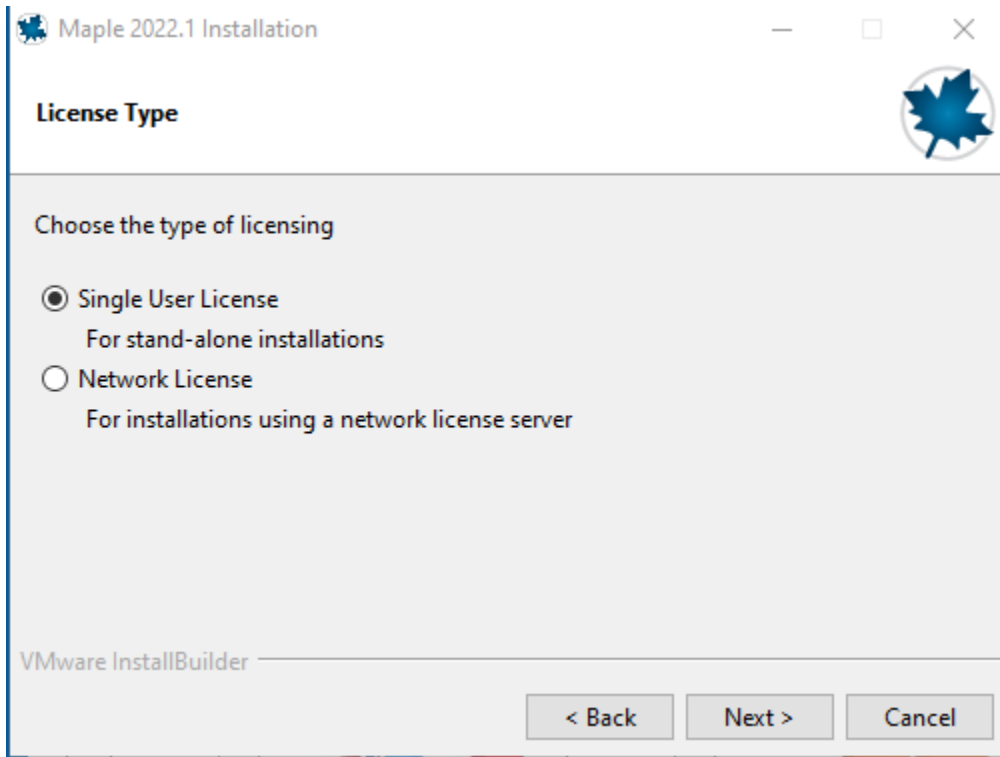
6. Select the appropriate response regarding a *Desktop Shortcut* and select **Next**.



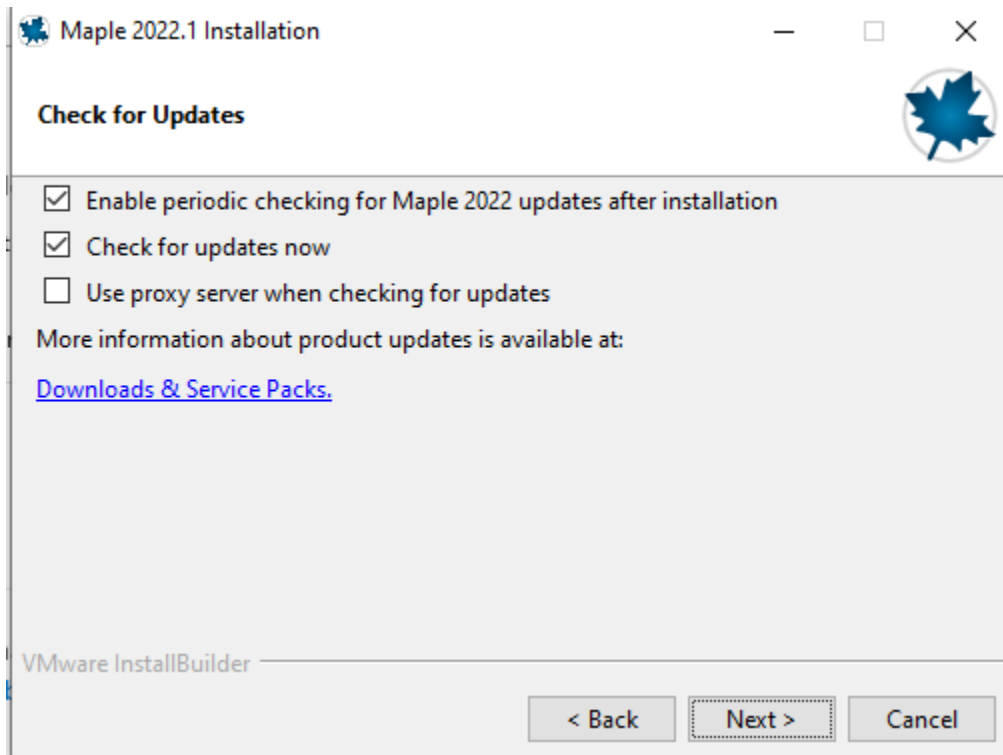
7. Select **Next** for *Configuration*.



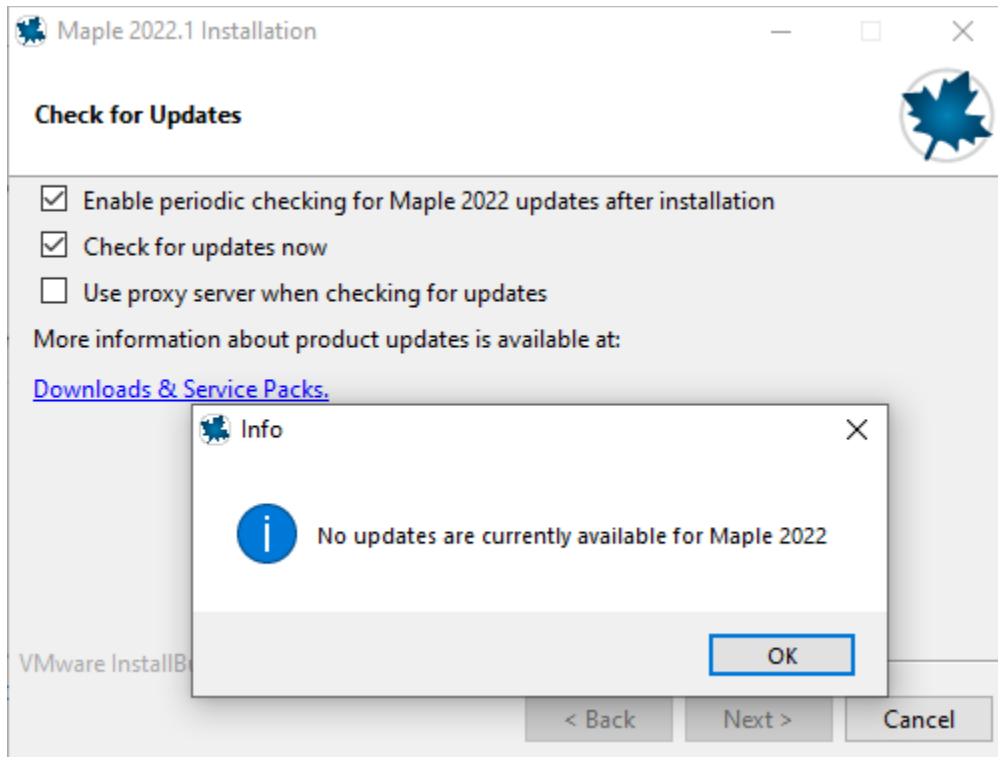
8. Select *“Single User License”* and select **Next**.



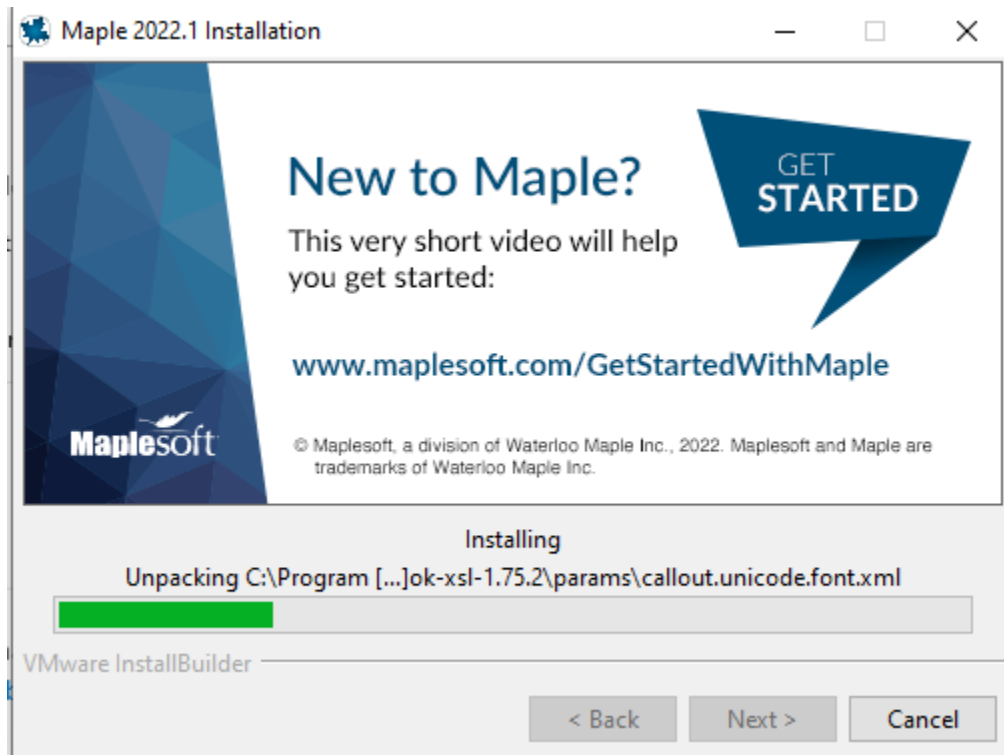
9. Select **Next** for *Check for Updates*.



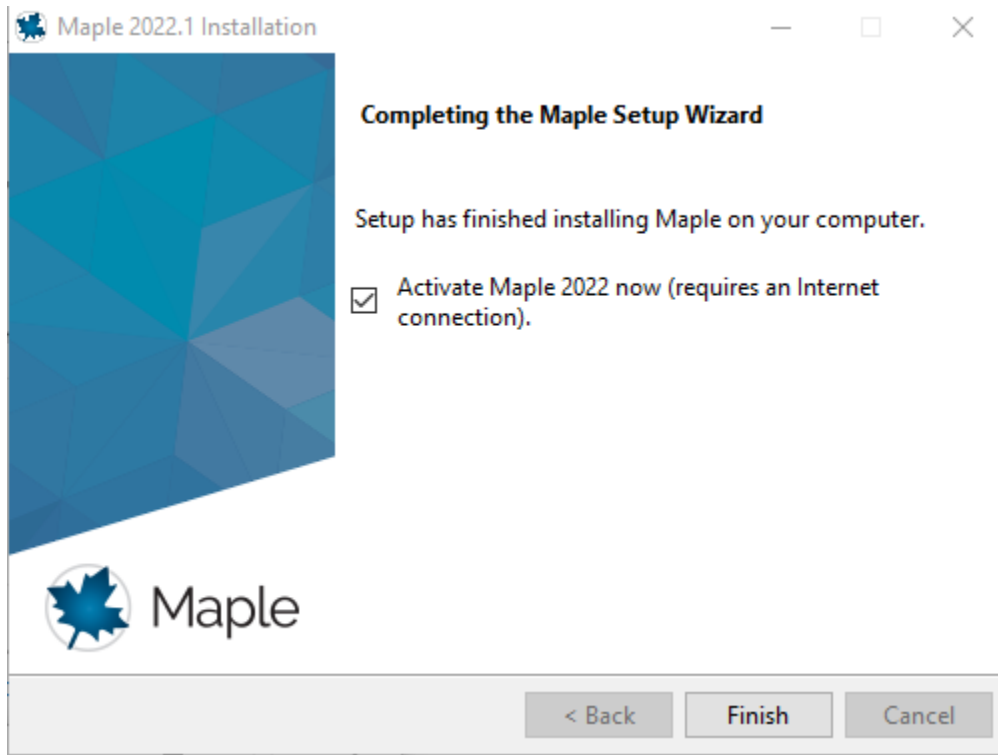
10. Select **OK** then select **Next**.



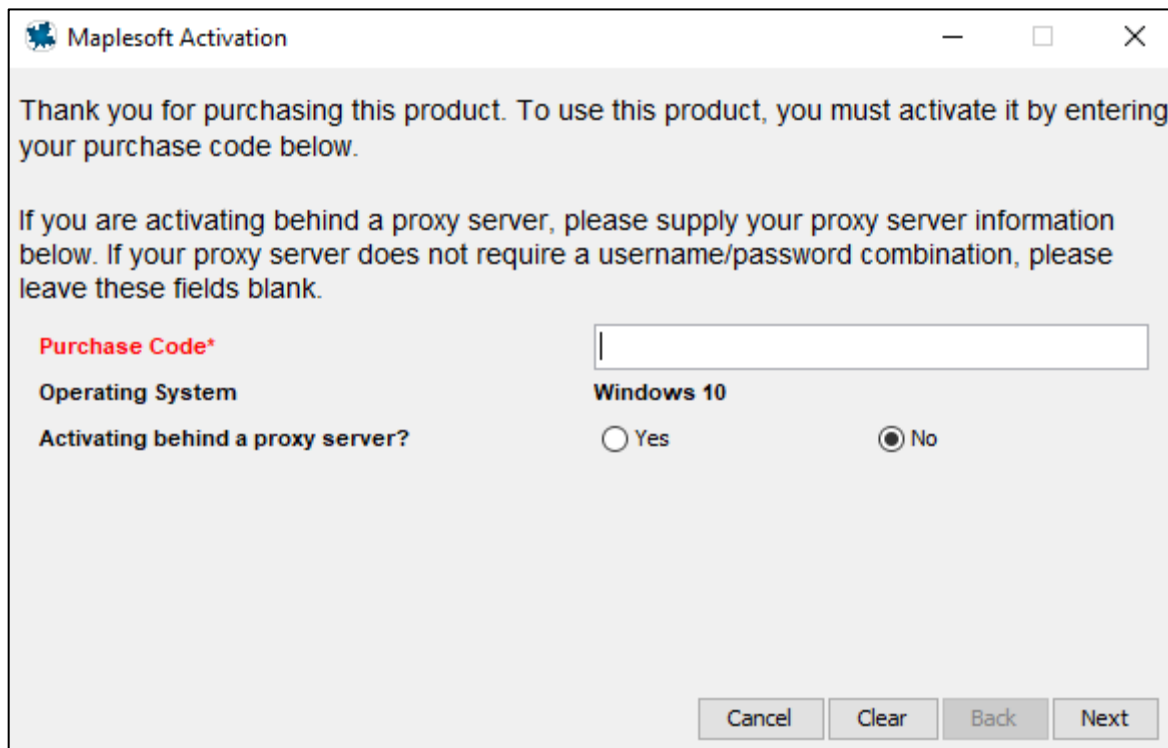
11. Maple 2022 will begin installation.



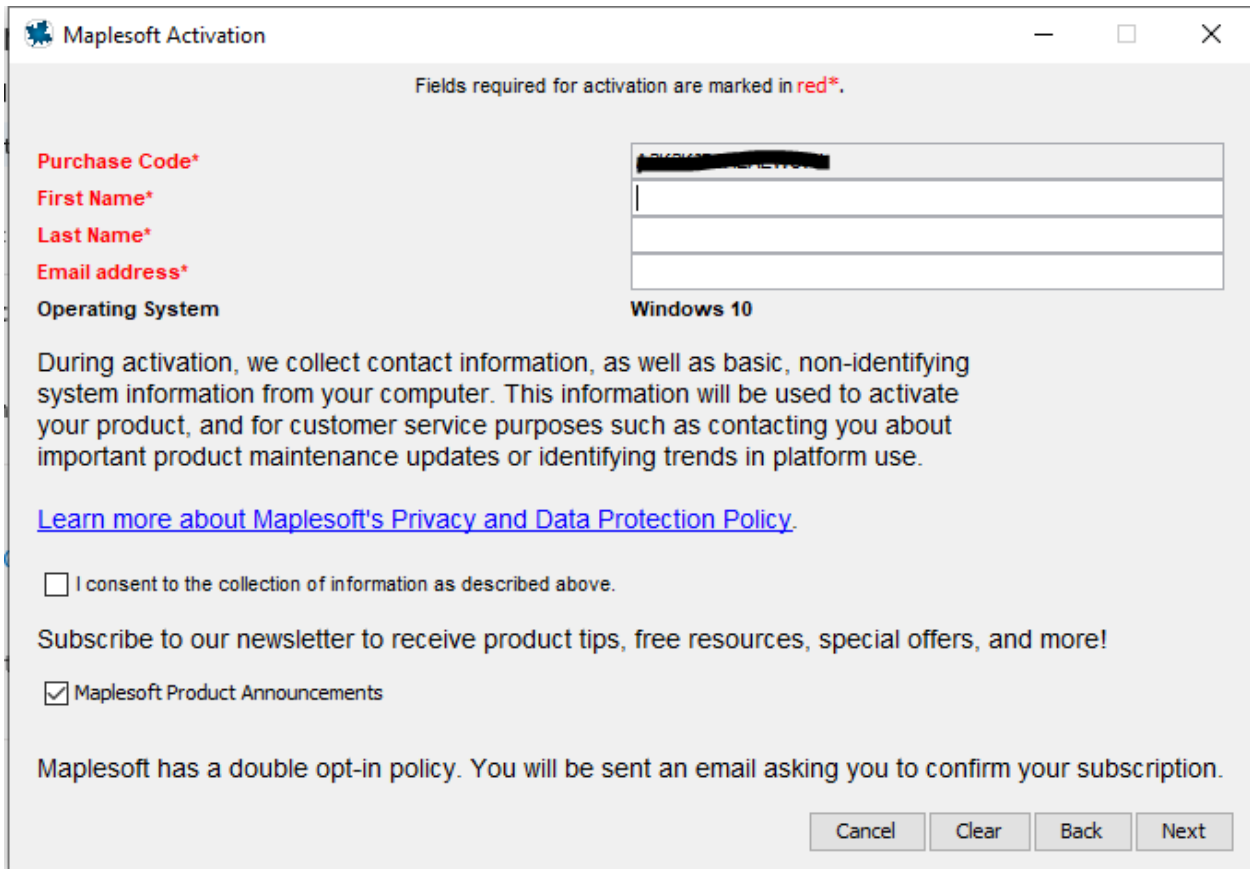
12. When the installation is finished, select **Finish**.



13. Open the Key.txt text file in step 1 and copy the purchase code. Paste the Maple purchase code in the appropriate field and select **Next**.

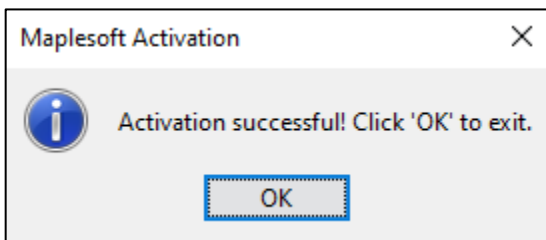


14. Enter first name, last name and email address. Select the checkbox for Consent to Information Collection and select **Next**.



The image shows a 'Maplesoft Activation' dialog box. At the top, it says 'Fields required for activation are marked in red\*'. Below this, there are several input fields: 'Purchase Code\*' (with a red asterisk), 'First Name\*' (with a red asterisk), 'Last Name\*' (with a red asterisk), and 'Email address\*' (with a red asterisk). The 'Operating System' is set to 'Windows 10'. Below the input fields, there is a paragraph of text explaining that during activation, contact information and basic system information are collected for product activation and customer service. A link is provided: '[Learn more about Maplesoft's Privacy and Data Protection Policy.](#)'. Below the link, there is a checkbox for 'I consent to the collection of information as described above.' which is currently unchecked. Below that, there is a section for newsletter subscription: 'Subscribe to our newsletter to receive product tips, free resources, special offers, and more!' with a checked checkbox for 'Maplesoft Product Announcements'. At the bottom, there is a note: 'Maplesoft has a double opt-in policy. You will be sent an email asking you to confirm your subscription.' and four buttons: 'Cancel', 'Clear', 'Back', and 'Next'.

15. Select **OK** for the *Activation* prompt.



16. Maple 2022 has been successfully installed and activated.

Need help with the installation? Contact the [IT Services Help Desk](#) at (414) 288-7799